

**Legend**

SCALE 1:50,000  
5 metre contour interval  
0 1km 2km

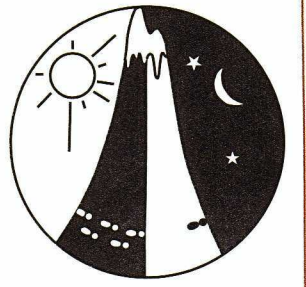
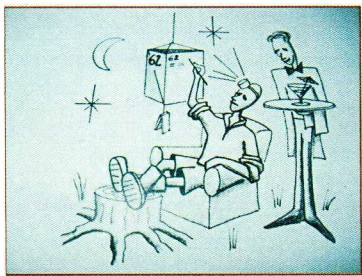
- Buildings & Tanks ■■■
- Continuations ———>
- Contours
- Control
- Dams ■
- Fence ———
- Hash House
- Magnetic North
- Out-of-bounds
- Patrolled Road
- Road, Major Sealed
- Road, Track Unsealed
- Transmission Line
- Watercourse
- Water Drop

**Setters / Veters**

- Mark Lawson
- Graham Patrick
- Colette Sims
- Steve Wolf

# The Cushy Kojonup Caper

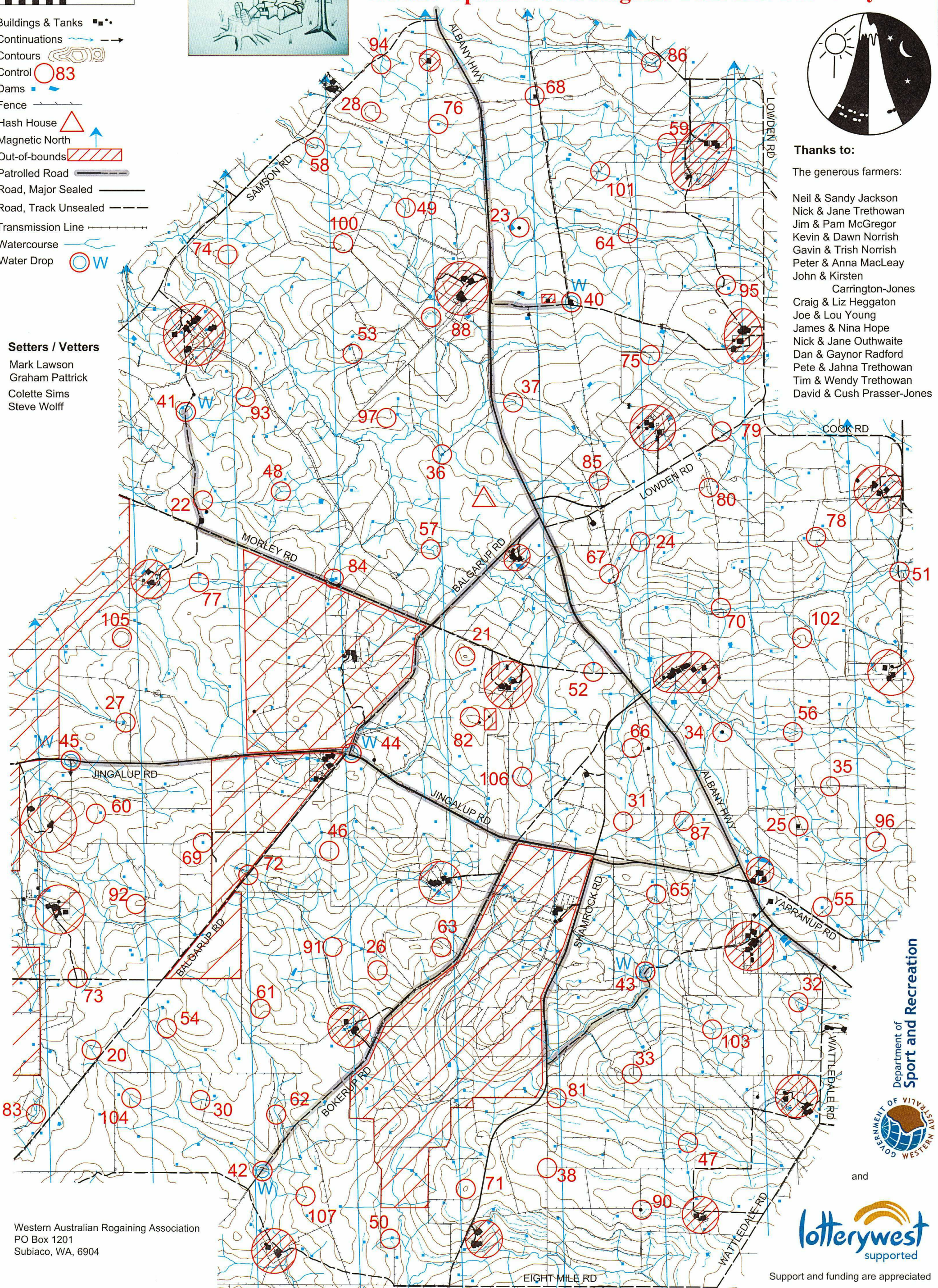
## WARA Upside Down Rogaine 20th-21st February 2010



**Thanks to:**

The generous farmers:

- Neil & Sandy Jackson
- Nick & Jane Trethowan
- Jim & Pam McGregor
- Kevin & Dawn Norrish
- Gavin & Trish Norrish
- Peter & Anna MacLeay
- John & Kirsten Carrington-Jones
- Craig & Liz Heggaton
- Joe & Lou Young
- James & Nina Hope
- Nick & Jane Outhwaite
- Dan & Gaynor Radford
- Pete & Jahna Trethowan
- Tim & Wendy Trethowan
- David & Cush Prasser-Jones



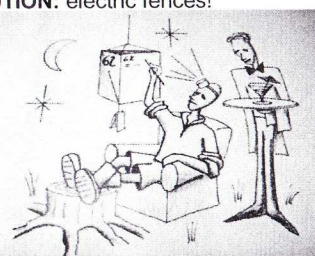
Western Australian Rogaining Association  
PO Box 1201  
Subiaco, WA, 6904



Support and funding are appreciated

This map was produced using OCAD 9.4.3 by the Western Australian Rogaining Association, wa.rogaine.asn.au Data supplied by DOLA and used under copy licence 393/93. Possession of this map does not give right of entry to this area.

**WARA Upside Down 12 Hour Rogaine: The Cushy Kojonup Caper, 20th-21st February 2010**

No.	Description	Points	No.	Description	Points	Important Information
20	The watercourse	20	64	The watercourse	60	<b>Control Cards</b> From 19.30 Saturday
21	The knoll	20	65	The gully	60	
22	The gully, head of	20	66	The spur, rocky	60	
23	The water tank	20	67	A rocky outcrop	60	
24	The watercourse junction	20	68	The stockyard, north western side	60	
25	The old stone hearth	20	69	The dam	60	
26	The spur	20				
27	The dam, SW corner	20	70	The watercourse bend	70	
28	The knoll	20	71	The knoll	70	
			72	Watercourse/road crossing	70	
30	The gully, shallow	30	73	Road/driveway junction	70	<b>Briefing</b> 19.45 Saturday
31	The spur, rocky	30	74	The broad knoll, northern side	70	
32	The gully	30	75	The watercourse junction	70	<b>Start</b> 20.00 Saturday
33	The small rocky outcrop	30	76	The dam, northern corner	70	
34	The water tank windmill	30	77	The watercourse	70	<b>Finish</b> 08.00 Sunday
35	The spur	30	78	The broad head of the watercourse	70	
36	The dam, SW side	30	79	The watercourse	70	<b>Hash House</b> Sunday Breakfast Approx. 06.00-09.00
37	The watercourse	30				
38	The fence corner	30				<b>Moonrise</b> 11.24 Saturday
			80	Acacia tree plantation, NE corner	80	
40	An old truck-Water drop	40	81	The watercourse bend	80	<b>Sunset</b> 18.59 Saturday
41	The track bend, eastern side-Water drop	40	82	The knoll, western end	80	
42	The watercourse-Water drop	40	83	The water course bend	80	<b>Moonset</b> 21.52 Saturday
43	The track bend-Water drop	40	84	The windmill between dams	80	
44	The gravelled clearing-Water drop	40	85	The gully	80	<b>Sunrise</b> 05.52 Sunday
45	Road/driveway junction, SW side- Water drop	40	86	The watercourse	80	
46	The broad knoll	40	87	The watercourse	80	<b>Late Penalty</b> 10 points per minute or part minute. LATE (no points) after 08.30 Sun.
47	The watercourse	40	88	The knoll	80	
48	The watercourse	40				<b>Controls used</b> 83
49	The watercourse	40	90	The water tank	90	
			91	A knoll, rocky	90	<b>Total Points</b> 4890
			92	The ridgeline	90	
50	The dam, western side	50	93	The watercourse	90	<b>CAUTION: electric fences!</b>
51	The watercourse/track crossing	50	94	The watercourse	90	
52	The track	50	95	A knoll, rocky	90	
53	The gully, shallow	50	96	The spur	90	
54	A gully	50	97	The rocky outcrop	90	
55	The dam, eastern corner	50				
56	The watercourse	50	100	The rocky spur, northern face	100	
57	The watercourse junction	50	101	The gully, broad	100	
58	The watercourse bend	50	102	The spur	100	
59	The watercourse	50	103	The watercourse junction	100	
			104	The watercourse	100	
60	The saddle, western side	60	105	The broad knoll	100	
61	The spur	60	106	The watercourse bend	100	
62	The watercourse	60	107	The gully	100	
63	The spur, rocky	60				

**Water Drops** at controls: 40, 41, 42, 43, 44, 45. If you are injured or in the event of an emergency please make your way to a water drop or patrolled road and wait for help.

**Patrolled Roads:** See roads and tracks indicated on the map: includes stretches of Albany Hwy, Balgarup Rd, Bokerup Rd, Jingalup Rd, Morley Rd and Shamrock Rd.